

Welcome

Your mouse uses new generation technology – a laser module that replaces the traditional LED mouse and provides amazing tracking ability. You can work with your mouse on most surfaces perfectly, even glass topped surfaces. It also uses a digital radio technology for convenient wireless connectivity combined with a rechargeable receiver for you to keep your mouse charged and ready to use.

Safety Notice

1. This product complies with IEC 60825-1, class 1 laser product.
2. Your product complies with FCC, CE and C-Tick rules.
3. This product has no serviceable parts. Use of controls or adjustments of procedures other than specified in the user guide may be hazardous.

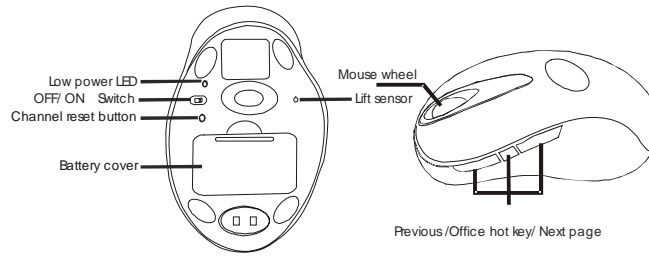
Important Note

Please charge the batteries for 7 hours before you use your mouse for the first time.



Please DO NOT direct the laser beam at anyone's eye.

Mouse Layout:

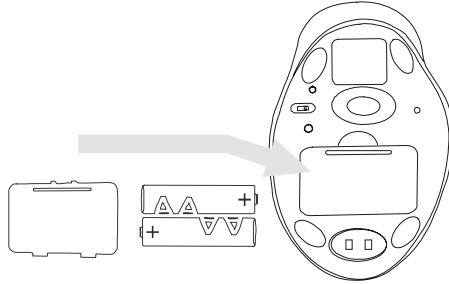


Installing the Batteries

Step 1 Pull up the battery cover of the mouse.

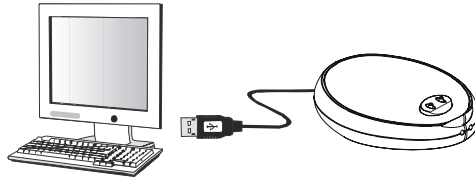
Step 2 Insert the batteries as shown inside the battery compartment.

Step 3 Replace the cover.



Install the Receiver and the Charger

The receiver (charger) is connected to your computer via a USB cable. It needs to plug into your computer by a USB port or a PS2 mouse port.



Connect to the USB or Mouse port of your computer

PS/2 Port

For PS/2 port installation

Please turn off your computer before plugging in the receiver cable to the computer's PS2 port. Plugging and unplugging cables to your computer's PS2 port while the computer is running can damage the PS2 port or your computer.



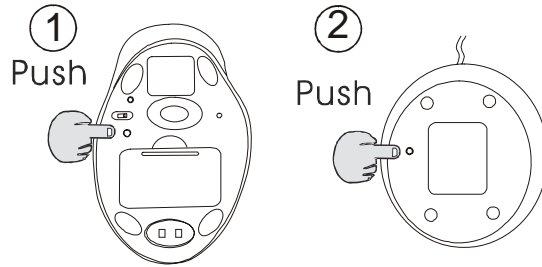
For USB port installation

Windows 98SE (or higher) is required for USB port installation. Connect the receiver cable to the USB port on the computer. For Windows, you may be prompted to insert the Windows software CD. Insert the driver's CD into the computer's CD-ROM drive when asked to do so. Follow the Windows instructions when prompted.

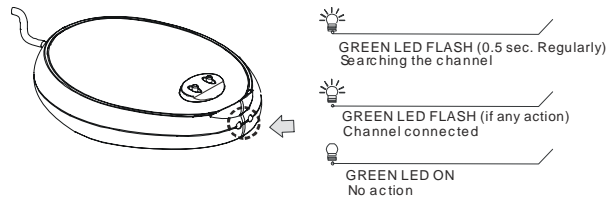


This Mouse is a plug-and-play device. Normally, it's not necessary to setup the RF Channel for wireless communication. But if some interference happens, then you must setup the connection by resetting the RF Channel.

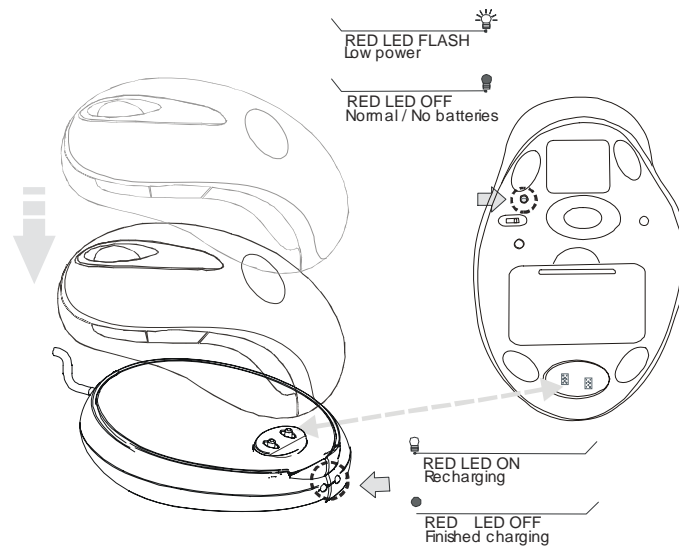
Setup the RF Channel connection between the Mouse and the Receiver



Push the channel reset button on the mouse. Push the channel reset button on the receiver
If the cursor does NOT move after 30 seconds, please do the steps above.



Recharging:



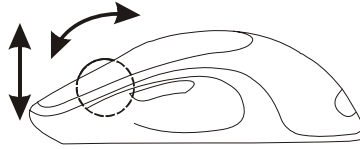
Please Note

The mouse will not recharge properly if plugged into a non-powered USB hub.

Using your Mouse

How to use the wheel

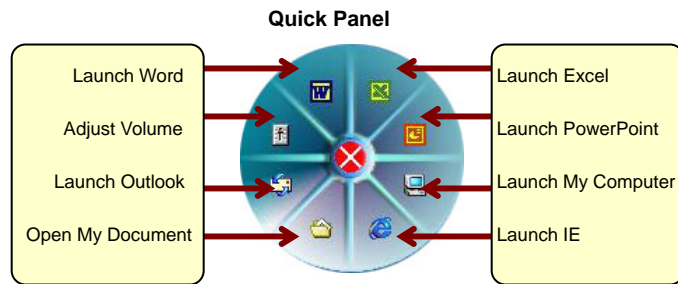
Your mouse has a wheel that functions both as a wheel for Windows scrolling and also as a customized button. It can be used as a standard mouse button, click (press down) the wheel. For scrolling on screen, simply move the wheel.



Utility & Office Hot Key

The Office hot key provides you with an easy way to customize your mouse operations on screen without using the taskbar or start menu.

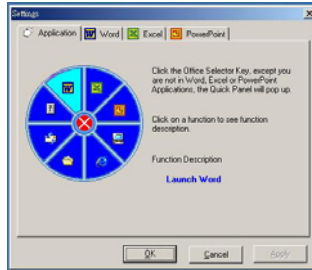
You just need to press the Office Hot Key on your mouse then the round shaped quick panel will pop up. You will see eight items on the Quick Panel providing effective accessibility for most frequently used Windows applications including Word, Excel and PowerPoint. You just need to click on the item you want to launch.



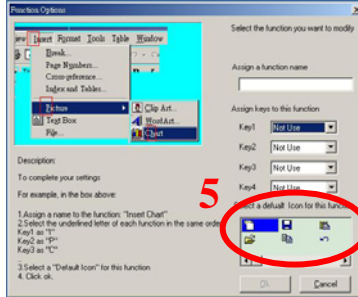
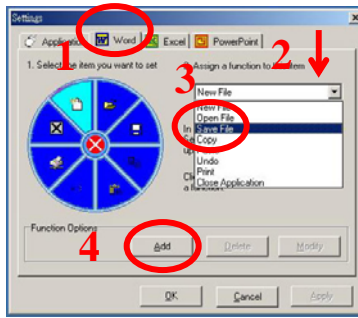
(Tips: There are popup tips when you point on the screen icons.)

Utility Settings

Double click the mouse icon on the right bottom corner of the Windows screen to get into the settings window. You can add new functions to your Quick Panel for making your own frequently used Quick Panel Commands.



Example: Add a “save” functional key in the Quick Panel for the Word application.



Troubleshooting

A. Mouse does not work upon installation

Try one or more of the following:

- For optimal performance, adjust the angle of the receiver to find the best performance.
- You must use this mouse a flat surface.
- Make sure you have installed the batteries correctly.
- Press the "Channel Reset" button on the receiver, and then press the "Channel Reset" button on the mouse.

B. Mouse not detected.

When using the mouse, it may not be detected by the computer or receiver. To remedy this problem, try the following

- Make sure the receiver is plugged in the right mouse port or USB port.
- Make sure your mouse port has the proper configuration. Refer to your computer documentation for the correct port configuration.
- You may re-setup the RF Channel connection between the Mouse and the Receiver (Please refer the procedure on Page 4), especially, when you have changed or recharged your batteries.

C. The Screen Cursors Does Not Move Properly.

- Change the angle of your radio receiver. Try adjusting the receiver and/or mouse to improve reception.
- Make sure that the battery low indicator is NOT lit on. Recharge batteries if the low battery indicator is lit.
- You may also need to change the RF Channel for the mouse, Press the "Channel Reset" button on the receiver, then press the "Channel Reset" button on the mouse.

D. Mouse does not work upon installation.

Try one or more of the following:

- Make sure you have installed the Driver correctly.
- Make sure the receiver cable is plugged in to the right PS2 port or USB port.
- Unplug the receiver and then plug in the receiver again. Make sure that it has been detected by the Operating Systems properly.
- Make sure your mouse port has the proper configuration. Refer to your computer documentation for the correct port configuration.

E. Mouse is too fast or too slow

- You can adjust the tracking speed of your mouse in the Windows "Control Panel" under Mouse\Pointer options.